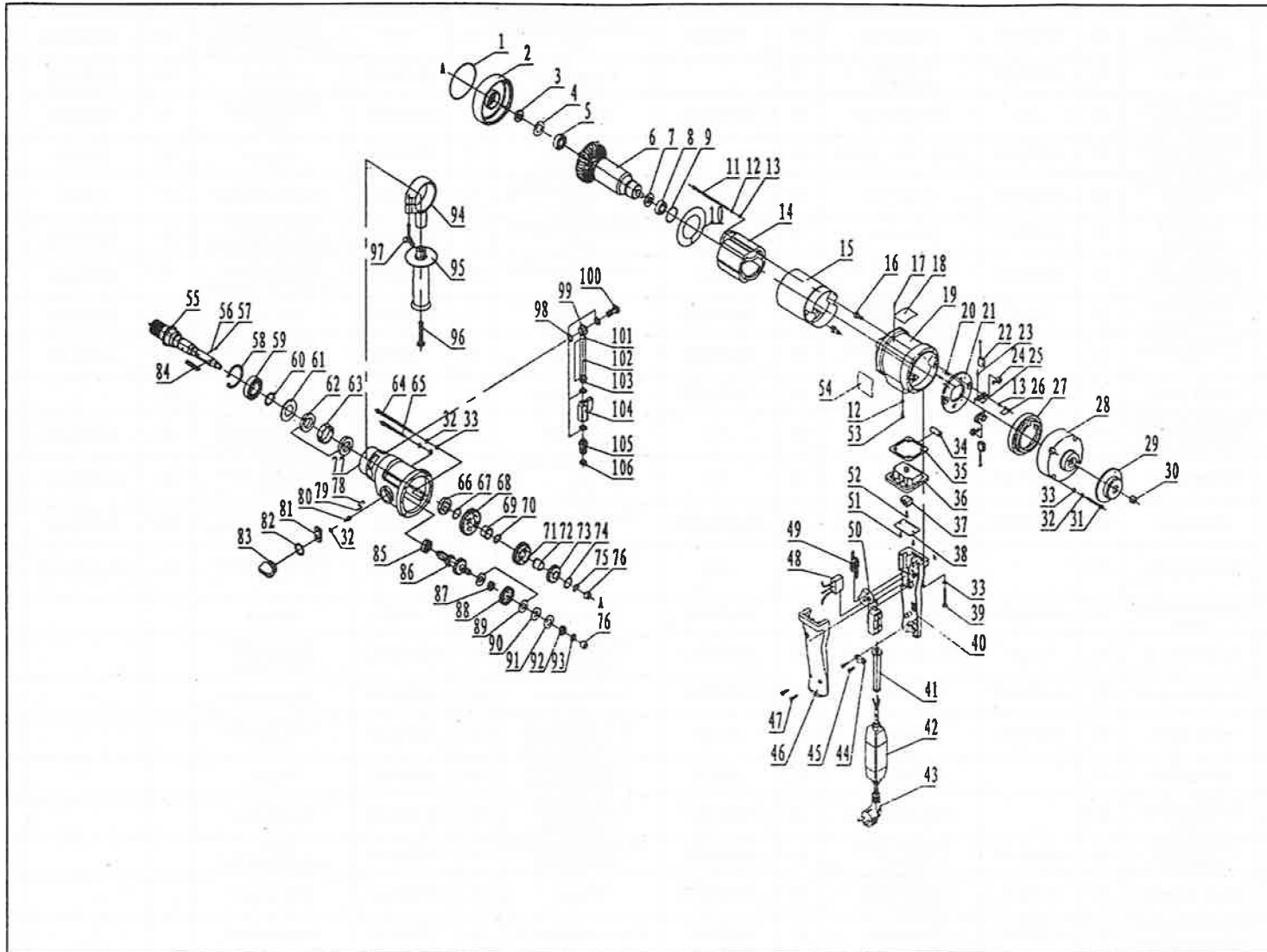


# 433-20000 DIAMOND CORE DRILL SPARE PART LIST

NO	SYMBOL	NAME	NO	SYMBOL	NAME	NO	SYMBOL	NAME	NO	SYMBOL	NAME	NO	SYMBOL	NAME
1	02-80/0-46	Sealing ring 78x2 O	24	02-80/0-28	Coil spring	47	ST4.2x19	Crossed slot tapping bolt	70	φ 17	Unmark uncork shield ring for shaft	93	02-80/0-40	16x10x1 washer
2	05-80/0-03	Mid-cover	25	02-80/0-56	Brush base assembly	48		Capacitance	71	06-80/0-05	6 # gear	94	02-80/0-44	Assistant handle cover
3	FB12x24x4.5	Bracket rubber sealing ring	26	M4	Hexagonal nut	49	02-80/0-67	Inductance	72	06-80/0-06	4# gear copper cover	95	02-80/0-45	Assistant handle
4	02-80/0-53	Oil sealing shim (32x18x0.8)	27	02-80/0-24	Rear cover jacket	50		Switch	73	06-80/0-04	4 # gear	96	M14x45	Hexagonal bolt
5	NSK6201	Deep groove ball bearing	28	02-80/0-16	Rear cover	51	ST2.9x16	Crossed slot tapping bolt	74	06-80/0-13	19x14x0.8 washer	97	M6x35	Butterfly shape bolt
6	05-80/1-01	Armature assembly	29	06-80/0-12	Rear cover	52	ST2.9x9.5	Crossed slot tapping bolt	75	05-80/0-26	13x1 Uncork shield ring for shaft	98	02-80/0-60	Spacer for water switch 18x13.3x1.5
7	02-80/0-52	Armature rear insulating cover	30	06-80/0-11	multifunctional level	53	M4x6	Crossed slot tapping bolt	76	HK1010	Stamping Outer needleroller bearings	99	02-80/0-62	Connector of water faucet
8	NSK6200	Deep groove ball bearing	31	M15x40	Inner hexagonal round head bolt	54	06-80/0-22	Scutcheon	77	06-80/0-02	Gear shell	100	02-80/0-61	Tighten bolt
9	φ 30x2.5	O-shape sealing ring	32	φ 5	Inner hexagonal bolt	55	06-80/0-01	Output shaft	78	φ 5x16	Bearing steel column	101	02-80/0-65	Tight ring
10	02-80/0-35	Shield board	33	φ 5	Spring Washer	56	02-80/0-50	Small spring	79	φ 3x12	Cylindrical pin	102		Inner φ8x350 mesh tube
11	M4x105	Pan head screws with cross recess	34	02-80/0-51	washer	57	φ 4	Steel ball	80	M5x12	Inner hexagonal round head bolt	103	02-80/0-63	Output connector of water faucet
12	φ 4	Spring washer	35	02-80/0-39	level	58	φ 47	Spring shield ring for holes	81	02-80/0-12	Adjustable speed block	104	02-80/0-43	1/4" mini ball valve
13	φ 4	Flat washer	36	02-80/0-21R	Post head DG8H-0	59	KS-NSK6005	Deep groove ball bearing	82	φ 20x3	O-shape sealing ring	105	02-80/0-64	Connector of water switch
14	02-80/2-01	Stator assembly	37		Handle bracket	60	φ 25	Spring shield ring for holes	83	02-80/0-13	Adjustable speed knob	106	H.2x2.65x16.5	O-shape sealing ring
15	02-80/0-22	Stator insulating cover	38	02-80/0-68	Handle lining	61	02-80/0-41	Shim cover	84	A5x40	Flat key			
16	02-80/0-23	Insulation mat	39	M15x35	Rear cover jacket	62	FB24x40x7	Bracket rubber sealing ring	85	KS-NSK629	Deep groove ball bearing			
17	2x4	Scutcheon rivet	40	06-80/0-19	Right handle	63	06-80/0-09	locating cover	86	06-80/0-03	3# gear axle			
18	06-80/0-21	name plate	41	02-80/0-31	jacket	64	M15x85	Inner hexagonal round head bolt	87	05-80/0-09	17x14x5copper cover			
19	02-80/0-15	Shell of drill	42		PRCD	65	M15x55	Inner hexagonal round head bolt	88	05-80/0-04	2# gear			
20	3x6	Mushroom head rivets	43		CABLE&PLUG	66	FB22x35x7	Bracket rubber sealing ring	89	02-80/0-08	friction disk			
21	02-80/0-25	Brush holder base plate	44	02-80/0-29	Pressure Line board	67	02-80/0-58	Oil sealing base shim 2(24x18x0.8)	90	02-80/0-10	Press circle 28x14x12x2			
22	02-80/0-47	Brush assembly	45	ST4.2x16	Crossed slot tapping bolt	68	06-80/0-08	8# gear	91	05-80/0-24	Dish spring			
23	M13x6	Pan head screws with cross recess	46	06-80/0-20	left handle	69	06-80/0-07	9# gear copper cover	92	M12x1.25	Hexagonal nut			

## 433-20000 THREE SPEED BREAKDOWN DRAWING



**Customer Service: 1.800.446.1805**